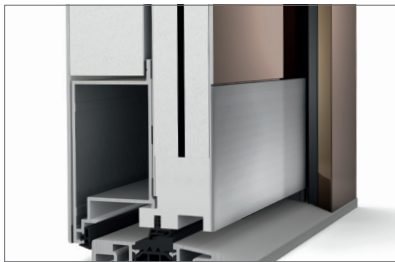




ALUMINIUM ENTRANCE DOOR

AT 400

- High quality aluminium door range with flush appearance on both sides
- Excellent thermal insulation $U_D = \text{up to } 0.75 \text{ W/m}^2\text{K}$
- 93 mm construction depth
- Special 2-part door panel with an overall thickness of 90 mm for perfect heat insulation and outside aluminium cover layer as well as 2 layers inbetween for highest stability
- Special expansion insert in the door panel for high climate stability
- 3 chamber frame profile with 35 mm polyamid rails and foamed insulation core
- Special triple gasket construction with overlapping, high-quality elastic silicone gaskets
- 3 chamber thresholds, thermally broken – ideal also for use in refurbishments
- Standard 5 point lock for highest security, RC2 optionally available
- All Internorm colours



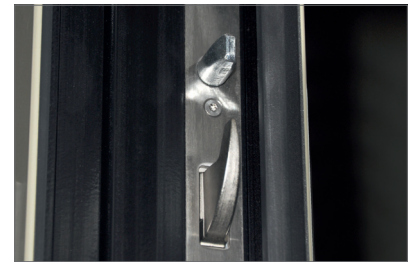
Highest stability

A special door panel made of high quality multiple layers ensures highest stability.



Thermal insulation

The multi-layered plate construction achieves excellent thermal insulation through its special set-up of the different materials (aluminium, epoxy and PU hard foam layers).



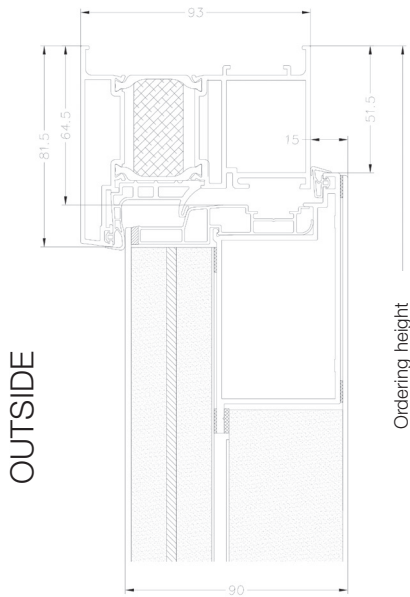
Highest security

The solid multi-point lock with hook bolt ensures standard security in RC2.

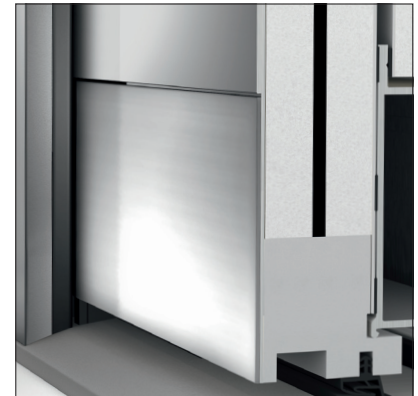
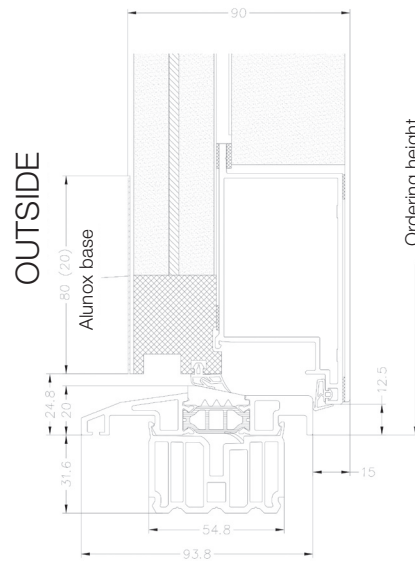
ALUMINIUM ENTRANCE DOOR AT 400



Lateral top



bottom



Alunox base

The alunox base fits flush into the door panel.

System description

Thermally broken aluminium system with fiber glass reinforced polyamid rails and foamed insulating core and aluminium profile on the inside.

- Frame construction depth 93 mm, sash construction depth 90 mm
- Triple gasket system with continuous hinge gasket and combined centre and outer gasket. In the floor area a high quality silicone tube seal is used
- Glazing thickness side element: 48 mm
- Fitting versions: wall cramp, rawplug or screw fitting
- All Internorm colours

Quality assurance/monitoring

- In-house quality assurance system
- DIN EN ISO 9001-certified

Designs

- Inward opening one sash stopper doors as well as door constructions with fixed elements

Raw materials

- Aluminium extrusion press profiles with powder-coated or anodised surface

Hardware

- Three dimensionally adjustable turn hinges
- Multi lock with hook bolt combination

Heat insulation

- In model range P100 the element U_D -value of $0.84 \text{ W/m}^2\text{K}$ is achieved (acc. to test certificate)
- In the frame and door panel combination a U_T -value of $1.4 \text{ W/m}^2\text{K}$ is achieved (acc. to test certificate)

Sound insulation

- With closed door panel filling a sound insulation value of 35 dB is achieved (acc. to test certificate)
- In a door panel with glass cut out (4/22/4/22/4/22/4) a sound insulation value of 36 dB is achieved (acc. to test certificate)

Security

- 3 point locking with 2 hook bolts and 1 main locking bar
- 5 point locking with 2 hook bolts, 2 security bolts and 1 main locking bar
- Upon request tested security acc. to EN 1627 – RC2 is available with all locking versions.

Warranty

- Please consult the Maintenance-Care-and-Warranties booklet for detailed information on the extensive Internorm warranties.

Distribution, installation and service

- By authorised Internorm distribution partners

Internorm Windows UK Ltd

Unit D, Colindale Business Park, 2-10 Carlisle Road, NW9 0HN, London UK,
T +44 (0) 208 205 9991, F +44 (0) 208 905 8744,
office@internorm.co.uk

www.internorm.com